

# MARBLEWAY PATH

STP BP21(14) · WEST RUTLAND · VERMONT

JULY 2023

CONCEPTUAL PLANS

PREPARED FOR  
**TOWN OF WEST RUTLAND**  
35 MARBLE ST.  
WEST RUTLAND, VT 05777



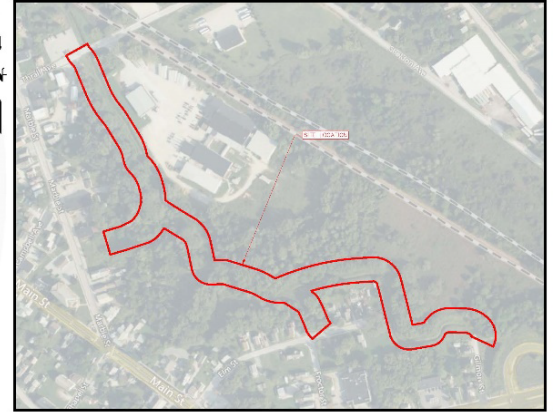
PREPARED BY  
**FUSS & O'NEILL**  
215 BELLEVILLE ROAD, SUITE 400  
WHITE RIVER JUNCTION, VT 05791  
802.678.0370  
www.fussandoneill.com

RUTLAND REGIONAL PLANNING  
COMMISSION  
67 MERCHANTS ROW  
RUTLAND, VT 05701

VERMONT SURVEY & ENGINEERING, INC.  
79 RIVER ST.  
MONPELIER, VT 05602  
802.229.9138

## SHEET INDEX

SHEET No.	SHEET TITLE
GI - 001	TITLE SHEET
CN - 001	GENERAL NOTES
CS - 100	INDEX MAP
CS - 001	THE PLAN
CS - 1-3	EXISTING CONDITIONS PLAN
CS - 201-203	SITE LAYOUT SHEETS
CG - 101-103	GRADING AND DRAINAGE
CT - 101-103	R.O.W. PLAN
CX - 301-305	CROSS SECTIONS
CD - 500-502	DETAILS



LOCATION MAP  
SCALE: 1"=200'

PROJECT No. 2022-001910  
DATE: 07/20/23

GI-001

**DATE:** February 12, 2024

**TIME:** 5:00 pm

## IN-PERSON LOCATION:

West Rutland Town Office  
35 Marble Street

## JOIN BY ZOOM:

<https://us06web.zoom.us/j/86548955202>

Meeting ID: 865 4895 5202

Call in: 1-646-876-9923

## MarbleWay Path Project INFORMATIONAL MEETING

The Town of West Rutland is working with Fuss & O'Neill to develop engineering plans to construct the MarbleWay Path – a multi-use path along the channel between Thrall Avenue and Gilmore Street.

At the Informational Meeting Fuss & O'Neill will provide an overview of the Conceptual Plans for the path.